

ClotMaster "Hula Cup" PS-3111

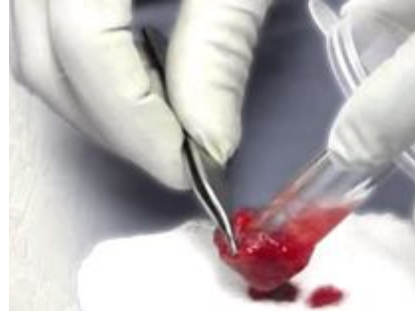
Technique for forming *Suturable BioScaffolds*™



SUTURABLE BIO-SCAFFOLDS are formed by keeping the blood sample (or bone marrow aspirate) in motion via mechanical or manual swirling for 10 minutes. The user can select the shape and fiber orientation of the fibrin clot by adjusting the glass rod height from the base. Constant motion of the blood for 10 minutes, will form a fibrin clot STRIP around the glass, or MEMBRANE under the glass rod.



**SUTURABLE BIO-SCAFFOLD
with PARALLEL FIBERS**



**SUTURABLE BIO-SCAFFOLD
MEMBRANE with CROSS-
LINKED FIBERS**



10 min Manual Swirl
or 10 min Mechanical Swirl on the
ClotMaster PS-3200 "Hula Dancer"



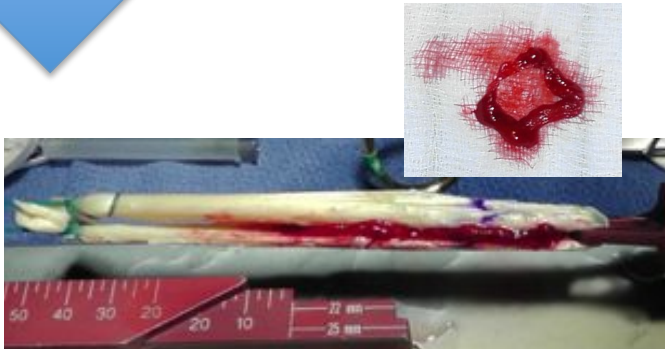
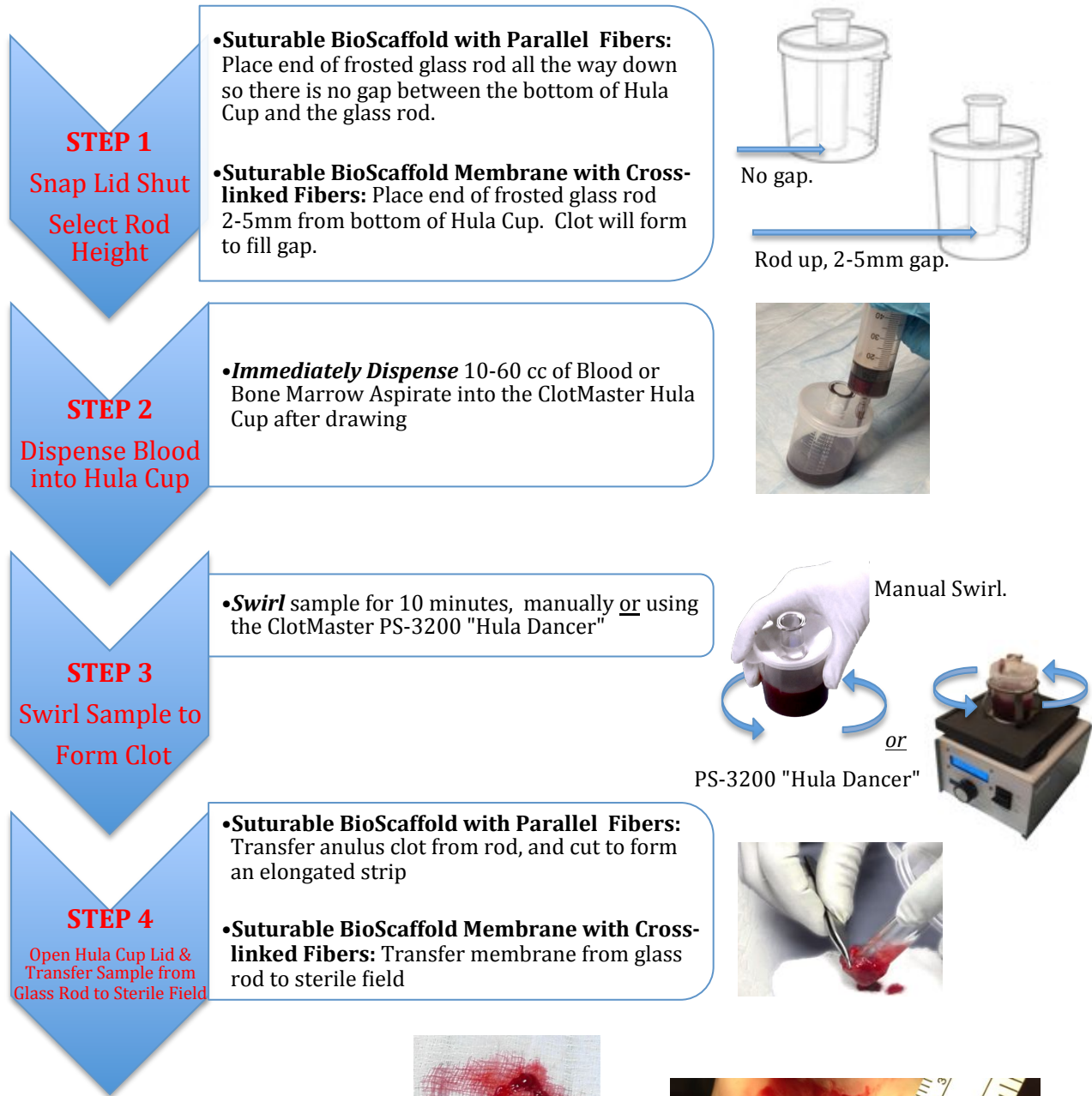
PS-3200 "HULA DANCER"

Automatic non-centrifuge orbital shaker for consistent 10 minute, hands-free formation of sterile Suturable BioScaffold, for the office or operating room. Variable speed and timer with automatic shut-off makes tissue engineering simple.

(See reverse side for detailed directions)

ClotMaster "Hula Cup" PS-3111

Directions for forming *Suturable BioScaffolds*™



SUTURABLE BIO-SCAFFOLD with PARALLEL FIBERS (ACL reconstruction)*



SUTURABLE BIO-SCAFFOLD MEMBRANE with CROSS-LINKED FIBERS (Micro-fracture cadaver trial)*

*Statements have not been reviewed by FDA; product is not intended to prevent, treat,